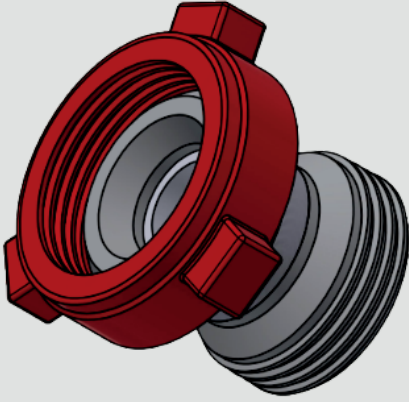


# INTRODUCING THE WRANGLER™

PATENT PENDING



## REDUCE THE RISK OF FALLING OBJECTS

**GAIN INCREASED RIG FLOOR SAFETY**

**PROTECT AGAINST DAMAGING EFFECTS ON  
SURFACE WHEN USING THE AGITATOR**

### FEATURES:

- 4" 1002 & 4" 602 Off The Shelf
- Standard & Long-Life Options
- CS Union with 1045 Standard & 17-4 Long-Life Internals
- Compact & Lightweight Design
- 100% Made in America
- Surface Vibration Reduction

### BENEFITS:

- Industry Recognized Connections
- More than 3 Drill Hole service life
- Excellent Service Life
- Installs Between Top Drive S Tube and Kelly Hose
- When Quality Matters!
- Enhanced OSHA Compliance

### APPLICATIONS:

- Drilling
- Mud Line
- Hydraulic Resonance Detuning
- Minimize Harmonic Interaction Between Pumps, System, and Downhole Agitator

PROTECT YOUR CREW WITH THE  
**WRANGLER™**

**FPC PERFORMANCE®**  
PULSATION CONTROL

### CONTACT

Phone 972.699.8600

Address 3309 Essex Dr #200  
Richardson, TX 75082

performancepulsation.com  
sales@performancepulsation.com

Scan to view our website



# CROSS SECTIONS

## 4" 1002 & 4" 602 MODELS

*SIMPLE ROBUST DESIGN*

